

The REG Procedure
Model: MODEL1
Dependent Variable: y survival

Number of Observations Read	54
Number of Observations Used	54

Analysis of Variance					
Source	DF	Sum of Squares	Mean Square	F Value	Pr > F
Model	1	1005152	1005152	7.10	0.0103
Error	52	7364369	141622		
Corrected Total	53	8369521			

Root MSE	376.32762	R-Square	0.1201
Dependent Mean	702.09259	Adj R-Sq	0.1032
Coeff Var	53.60085		

Parameter Estimates						
Variable	Label	DF	Parameter Estimate	Standard Error	t Value	Pr > t
Intercept	Intercept	1	205.25616	193.39718	1.06	0.2934
x1	blood-clotting	1	85.90832	32.24672	2.66	0.0103

The REG Procedure
Model: MODEL1
Dependent Variable: y survival

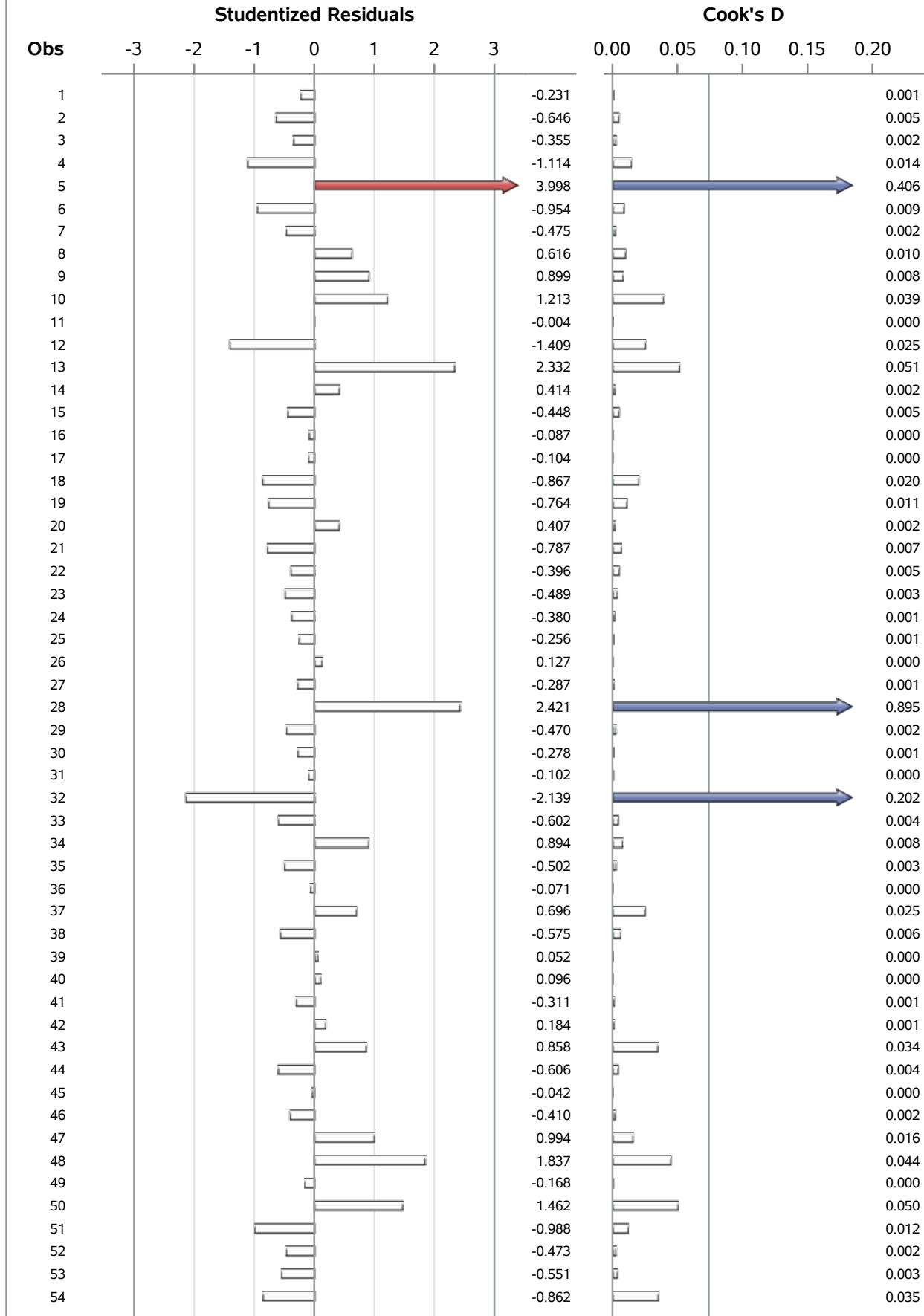
Output Statistics							
Obs	Dependent Variable	Predicted Value	Std Error Mean Predict	Residual	Std Error Residual	Student Residual	Cook's D
1	695	780.8419	59.1304	-85.8419	371.7	-0.231	0.001
2	403	643.3886	55.7512	-240.3886	372.2	-0.646	0.005
3	710	840.9777	73.0781	-130.9777	369.2	-0.355	0.002
4	349	763.6602	56.1847	-414.6602	372.1	-1.114	0.014
5	2343	875.3410	82.7747	1468	367.1	3.998	0.406
6	348	703.5244	51.2145	-355.5244	372.8	-0.954	0.009
7	518	694.9336	51.2822	-176.9336	372.8	-0.475	0.002
8	749	523.1169	84.4741	225.8831	366.7	0.616	0.010
9	1056	720.7061	51.6861	335.2939	372.8	0.899	0.008
10	968	523.1169	84.4741	444.8831	366.7	1.213	0.039
11	745	746.4786	53.8537	-1.4786	372.5	-0.004	0.000
12	257	780.8419	59.1304	-523.8419	371.7	-1.409	0.025
13	1573	703.5244	51.2145	869.4756	372.8	2.332	0.051
14	858	703.5244	51.2145	154.4756	372.8	0.414	0.002
15	702	866.7502	80.2661	-164.7502	367.7	-0.448	0.005
16	809	840.9777	73.0781	-31.9777	369.2	-0.087	0.000
17	682	720.7061	51.6861	-38.7061	372.8	-0.104	0.000
18	205	523.1169	84.4741	-318.1169	366.7	-0.867	0.020
19	550	832.3869	70.8137	-282.3869	369.6	-0.764	0.011
20	838	686.3427	51.5518	151.6573	372.8	0.407	0.002
21	359	651.9794	54.5571	-292.9794	372.4	-0.787	0.007
22	353	497.3444	92.3541	-144.3444	364.8	-0.396	0.005
23	599	780.8419	59.1304	-181.8419	371.7	-0.489	0.003
24	562	703.5244	51.2145	-141.5244	372.8	-0.380	0.001
25	651	746.4786	53.8537	-95.4786	372.5	-0.256	0.001
26	751	703.5244	51.2145	47.4756	372.8	0.127	0.000
27	545	651.9794	54.5571	-106.9794	372.4	-0.287	0.001
28	1965	1167	182.0224	797.5707	329.4	2.421	0.895
29	477	651.9794	54.5571	-174.9794	372.4	-0.470	0.002
30	600	703.5244	51.2145	-103.5244	372.8	-0.278	0.001
31	443	480.1628	97.7865	-37.1628	363.4	-0.102	0.000
32	181	952.6585	107.0915	-771.6585	360.8	-2.139	0.202
33	411	634.7977	57.1026	-223.7977	372.0	-0.602	0.004

The REG Procedure
Model: MODEL1
Dependent Variable: y survival

Output Statistics							
Obs	Dependent Variable	Predicted Value	Std Error Mean Predict	Residual	Std Error Residual	Student Residual	Cook's D
34	1037	703.5244	51.2145	333.4756	372.8	0.894	0.008
35	482	669.1611	52.6824	-187.1611	372.6	-0.502	0.003
36	634	660.5702	53.5309	-26.5702	372.5	-0.071	0.000
37	678	428.6178	114.7174	249.3822	358.4	0.696	0.025
38	362	574.6619	70.0757	-212.6619	369.7	-0.575	0.006
39	637	617.6161	60.2338	19.3839	371.5	0.052	0.000
40	705	669.1611	52.6824	35.8389	372.6	0.096	0.000
41	536	651.9794	54.5571	-115.9794	372.4	-0.311	0.001
42	582	514.5261	87.0606	67.4739	366.1	0.184	0.001
43	1270	961.2494	109.9344	308.7506	359.9	0.858	0.034
44	538	763.6602	56.1847	-225.6602	372.1	-0.606	0.004
45	482	497.3444	92.3541	-15.3444	364.8	-0.042	0.000
46	611	763.6602	56.1847	-152.6602	372.1	-0.410	0.002
47	960	591.8436	65.8423	368.1564	370.5	0.994	0.016
48	1300	617.6161	60.2338	682.3839	371.5	1.837	0.044
49	581	643.3886	55.7512	-62.3886	372.2	-0.168	0.000
50	1078	540.2986	79.4414	537.7014	367.8	1.462	0.050
51	405	772.2511	57.5861	-367.2511	371.9	-0.988	0.012
52	579	755.0694	54.9370	-176.0694	372.3	-0.473	0.002
53	550	755.0694	54.9370	-205.0694	372.3	-0.551	0.003
54	651	961.2494	109.9344	-310.2494	359.9	-0.862	0.035

The REG Procedure
Model: MODEL1
Dependent Variable: y survival

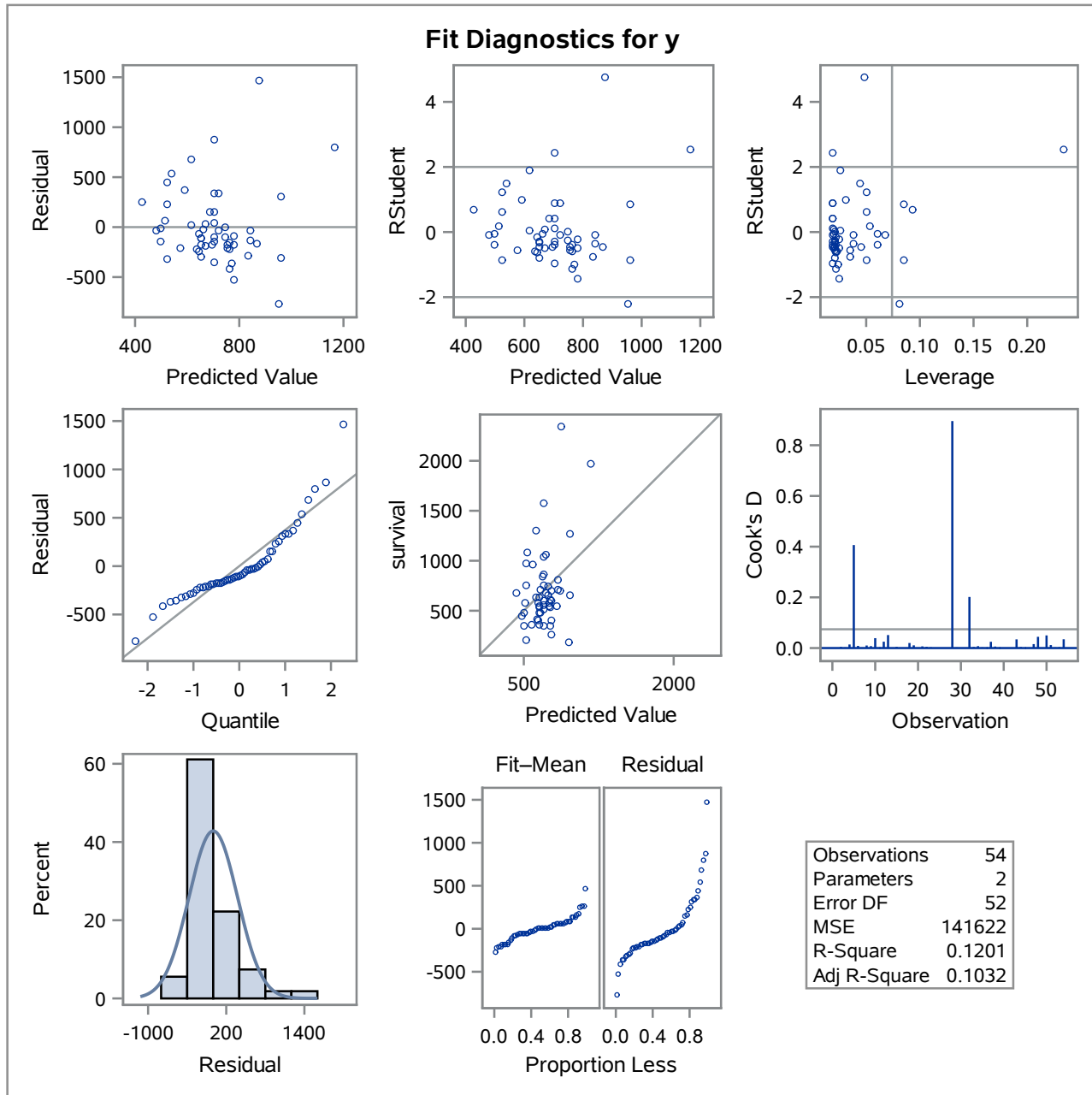
Studentized Residuals and Cook's D for y



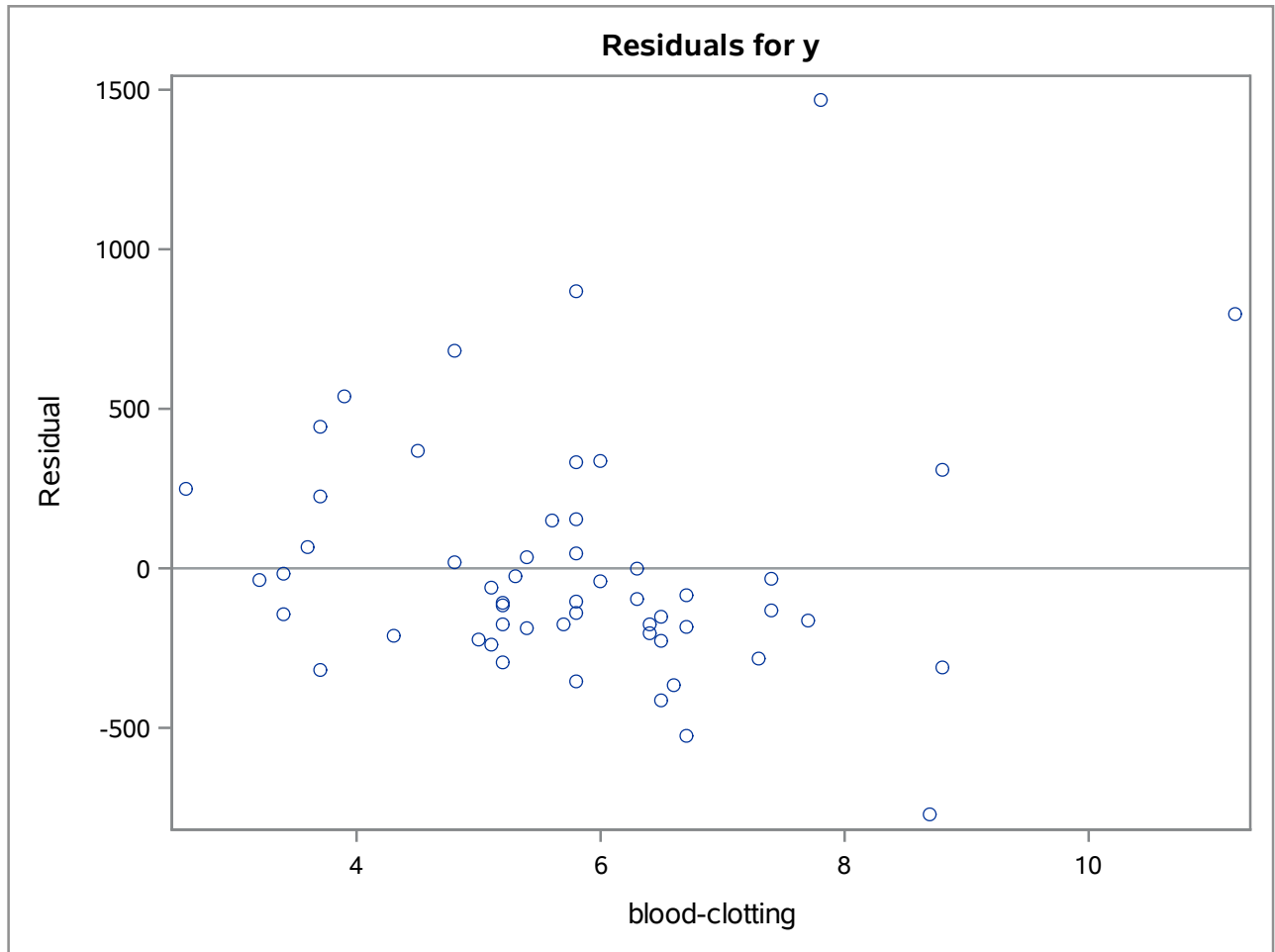
■ |Studentized Residual| ≥ 3, Prob ≤ 0.0019 ■ Cook's D ≥ 4 / n = 0.074

The REG Procedure
 Model: MODEL1
 Dependent Variable: y survival

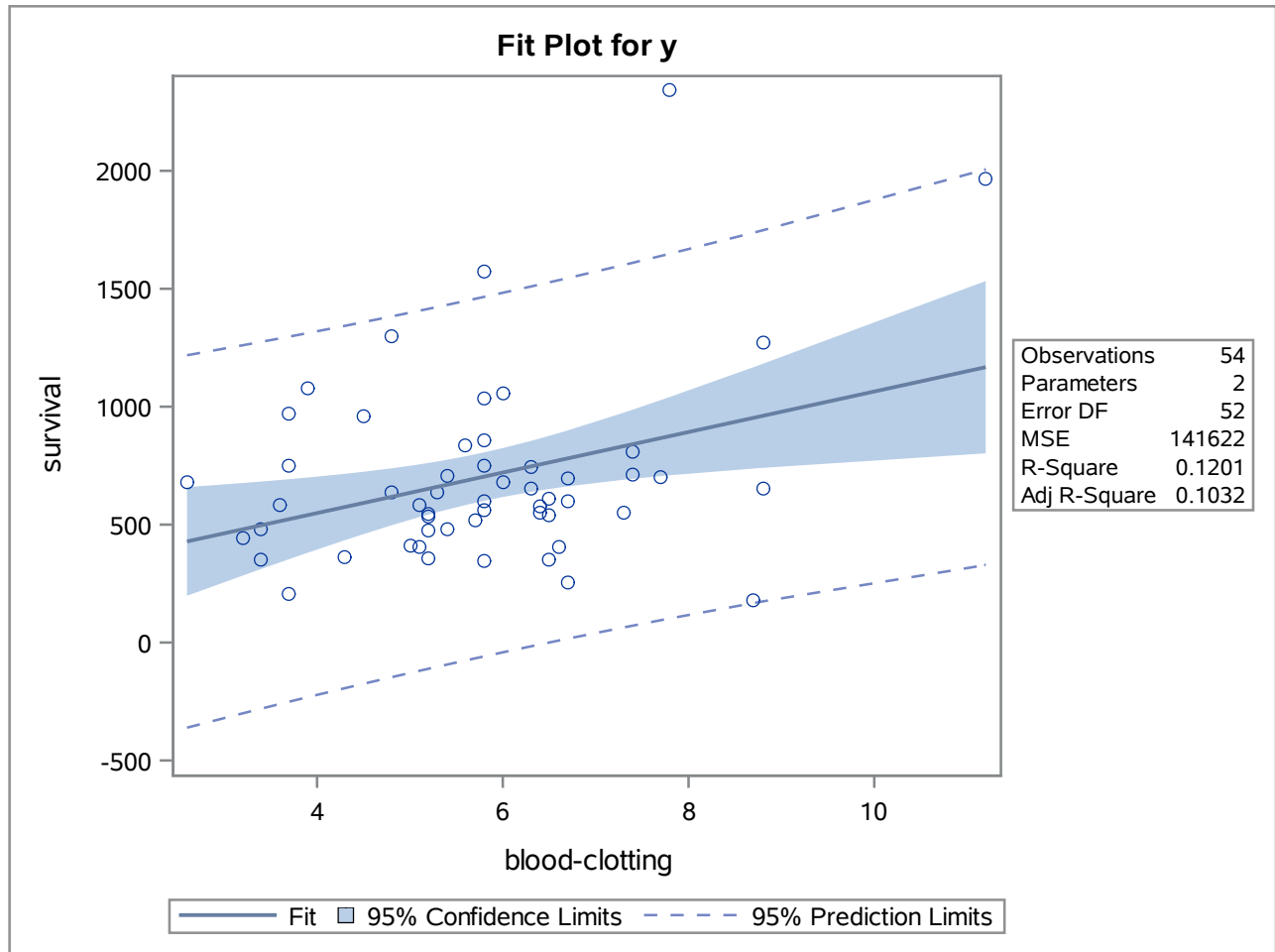
Sum of Residuals	0
Sum of Squared Residuals	7364369
Predicted Residual SS (PRESS)	8410327

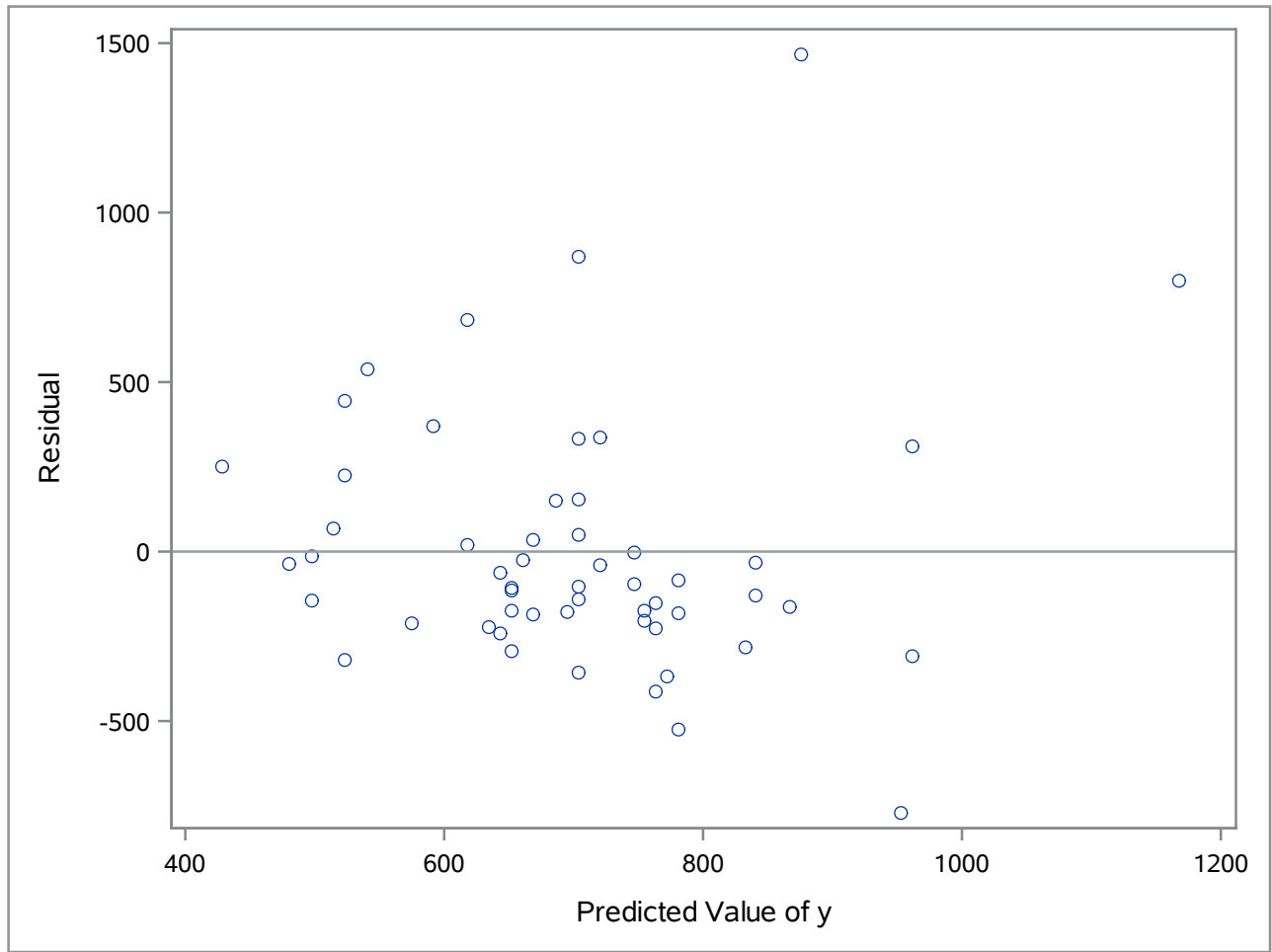


The REG Procedure
Model: MODEL1

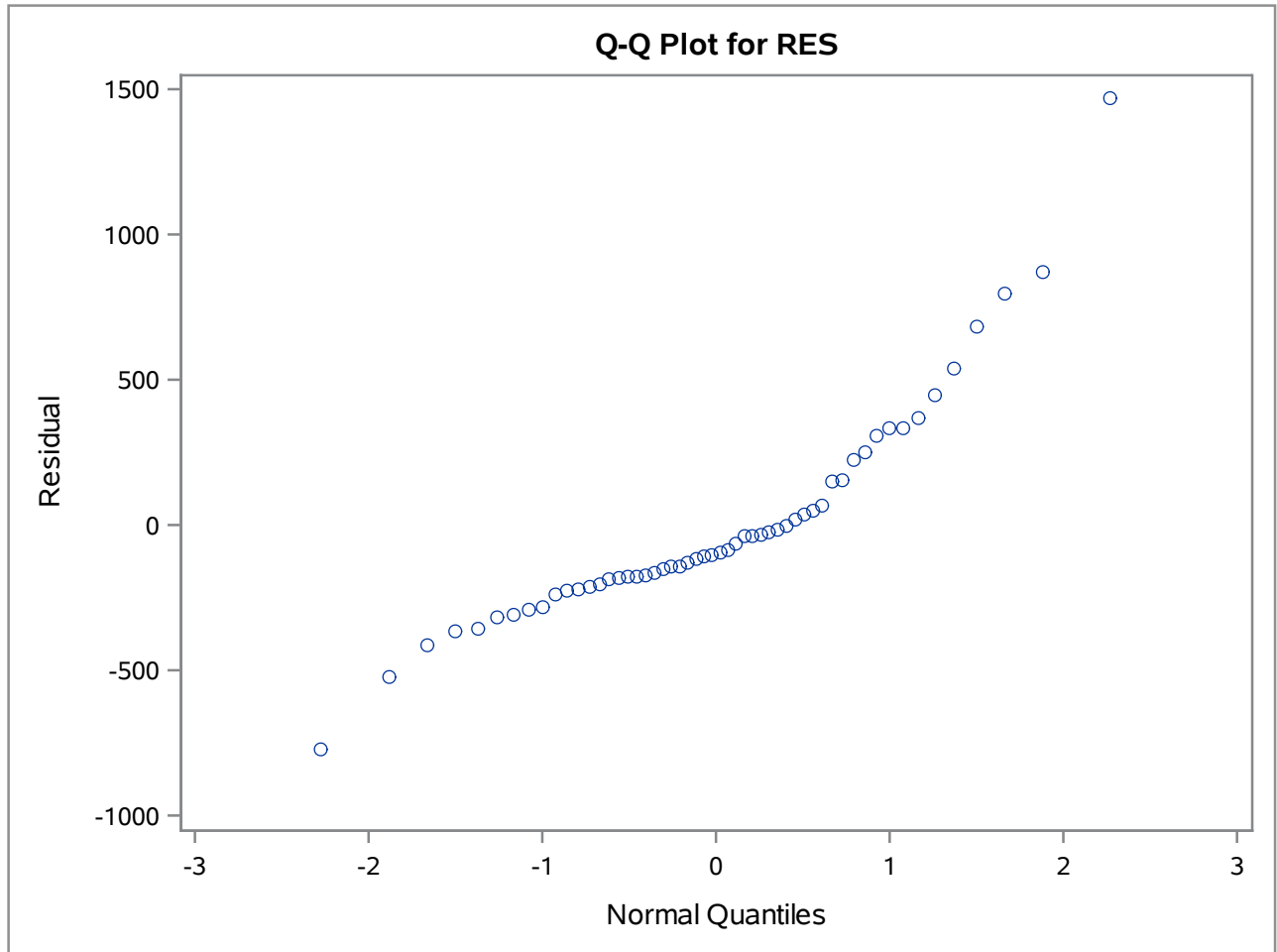


The REG Procedure
Model: MODEL1





The UNIVARIATE Procedure



The REG Procedure
Model: MODEL1
Dependent Variable: lny

Number of Observations Read	54
Number of Observations Used	54

Analysis of Variance					
Source	DF	Sum of Squares	Mean Square	F Value	Pr > F
Model	1	0.77696	0.77696	3.36	0.0726
Error	52	12.02755	0.23130		
Corrected Total	53	12.80451			

Root MSE	0.48094	R-Square	0.0607
Dependent Mean	6.43054	Adj R-Sq	0.0426
Coeff Var	7.47893		

Parameter Estimates						
Variable	Label	DF	Parameter Estimate	Standard Error	t Value	Pr > t
Intercept	Intercept	1	5.99373	0.24716	24.25	<.0001
x1	blood-clotting	1	0.07553	0.04121	1.83	0.0726

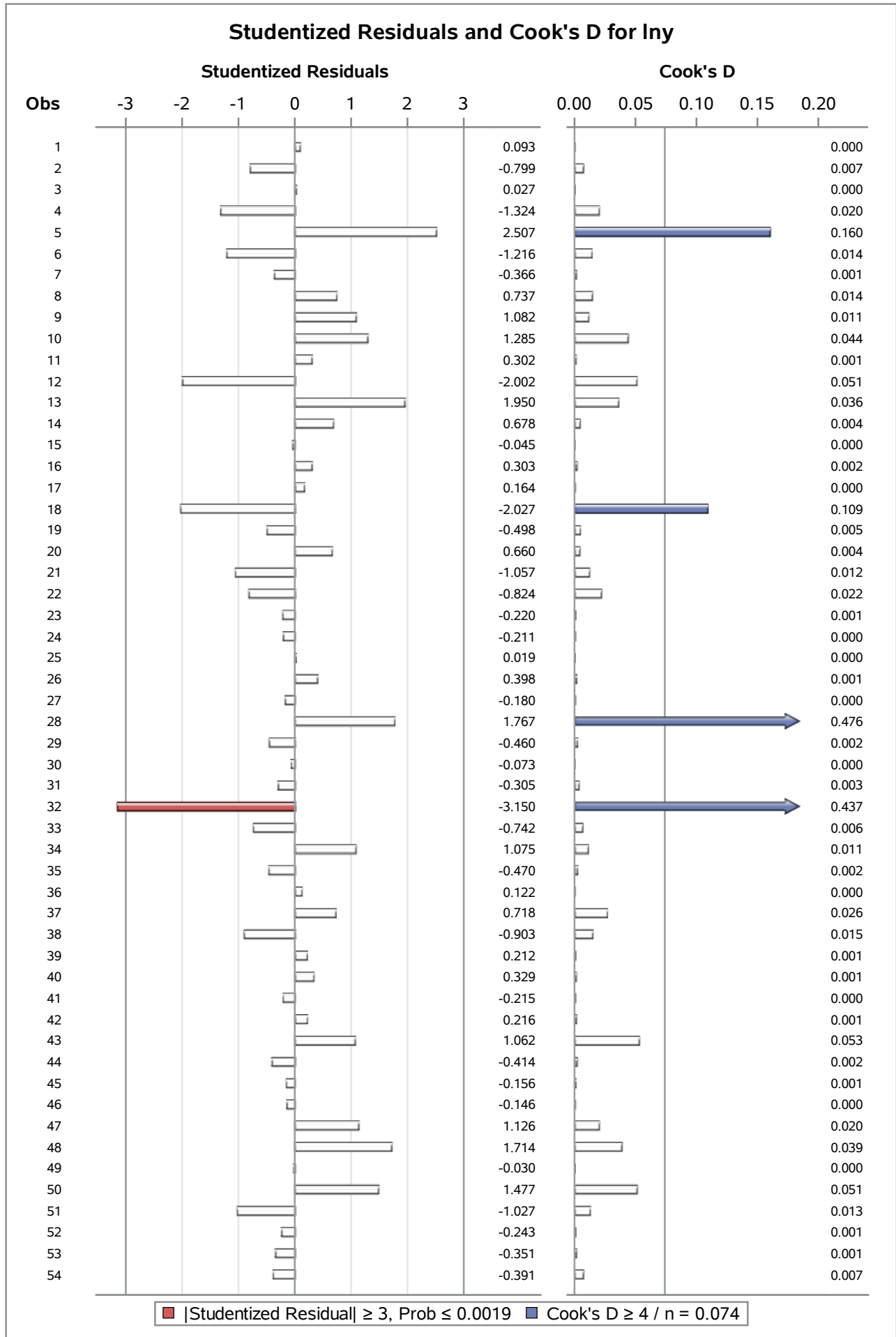
The REG Procedure
Model: MODEL1
Dependent Variable: lny

Output Statistics							
Obs	Dependent Variable	Predicted Value	Std Error Mean Predict	Residual	Std Error Residual	Student Residual	Cook's D
1	6.54	6.4998	0.0756	0.0441	0.475	0.093	0.000
2	6.00	6.3789	0.0712	-0.3800	0.476	-0.799	0.007
3	6.57	6.5526	0.0934	0.0126	0.472	0.027	0.000
4	5.86	6.4847	0.0718	-0.6296	0.476	-1.324	0.020
5	7.76	6.5829	0.1058	1.1763	0.469	2.507	0.160
6	5.85	6.4318	0.0655	-0.5796	0.476	-1.216	0.014
7	6.25	6.4242	0.0655	-0.1743	0.476	-0.366	0.001
8	6.62	6.2732	0.1080	0.3456	0.469	0.737	0.014
9	6.96	6.4469	0.0661	0.5153	0.476	1.082	0.011
10	6.88	6.2732	0.1080	0.6020	0.469	1.285	0.044
11	6.61	6.4696	0.0688	0.1438	0.476	0.302	0.001
12	5.55	6.4998	0.0756	-0.9507	0.475	-2.002	0.051
13	7.36	6.4318	0.0655	0.9289	0.476	1.950	0.036
14	6.75	6.4318	0.0655	0.3228	0.476	0.678	0.004
15	6.55	6.5753	0.1026	-0.0214	0.470	-0.045	0.000
16	6.70	6.5526	0.0934	0.1431	0.472	0.303	0.002
17	6.53	6.4469	0.0661	0.0781	0.476	0.164	0.000
18	5.32	6.2732	0.1080	-0.9502	0.469	-2.027	0.109
19	6.31	6.5451	0.0905	-0.2352	0.472	-0.498	0.005
20	6.73	6.4167	0.0659	0.3143	0.476	0.660	0.004
21	5.88	6.3865	0.0697	-0.5032	0.476	-1.057	0.012
22	5.87	6.2505	0.1180	-0.3841	0.466	-0.824	0.022
23	6.40	6.4998	0.0756	-0.1045	0.475	-0.220	0.001
24	6.33	6.4318	0.0655	-0.1003	0.476	-0.211	0.000
25	6.48	6.4696	0.0688	0.008944	0.476	0.019	0.000
26	6.62	6.4318	0.0655	0.1896	0.476	0.398	0.001
27	6.30	6.3865	0.0697	-0.0857	0.476	-0.180	0.000
28	7.58	6.8397	0.2326	0.7436	0.421	1.767	0.476
29	6.17	6.3865	0.0697	-0.2190	0.476	-0.460	0.002
30	6.40	6.4318	0.0655	-0.0349	0.476	-0.073	0.000
31	6.09	6.2354	0.1250	-0.1419	0.464	-0.305	0.003
32	5.20	6.6508	0.1369	-1.4523	0.461	-3.150	0.437
33	6.02	6.3714	0.0730	-0.3528	0.475	-0.742	0.006

The REG Procedure
Model: MODEL1
Dependent Variable: lny

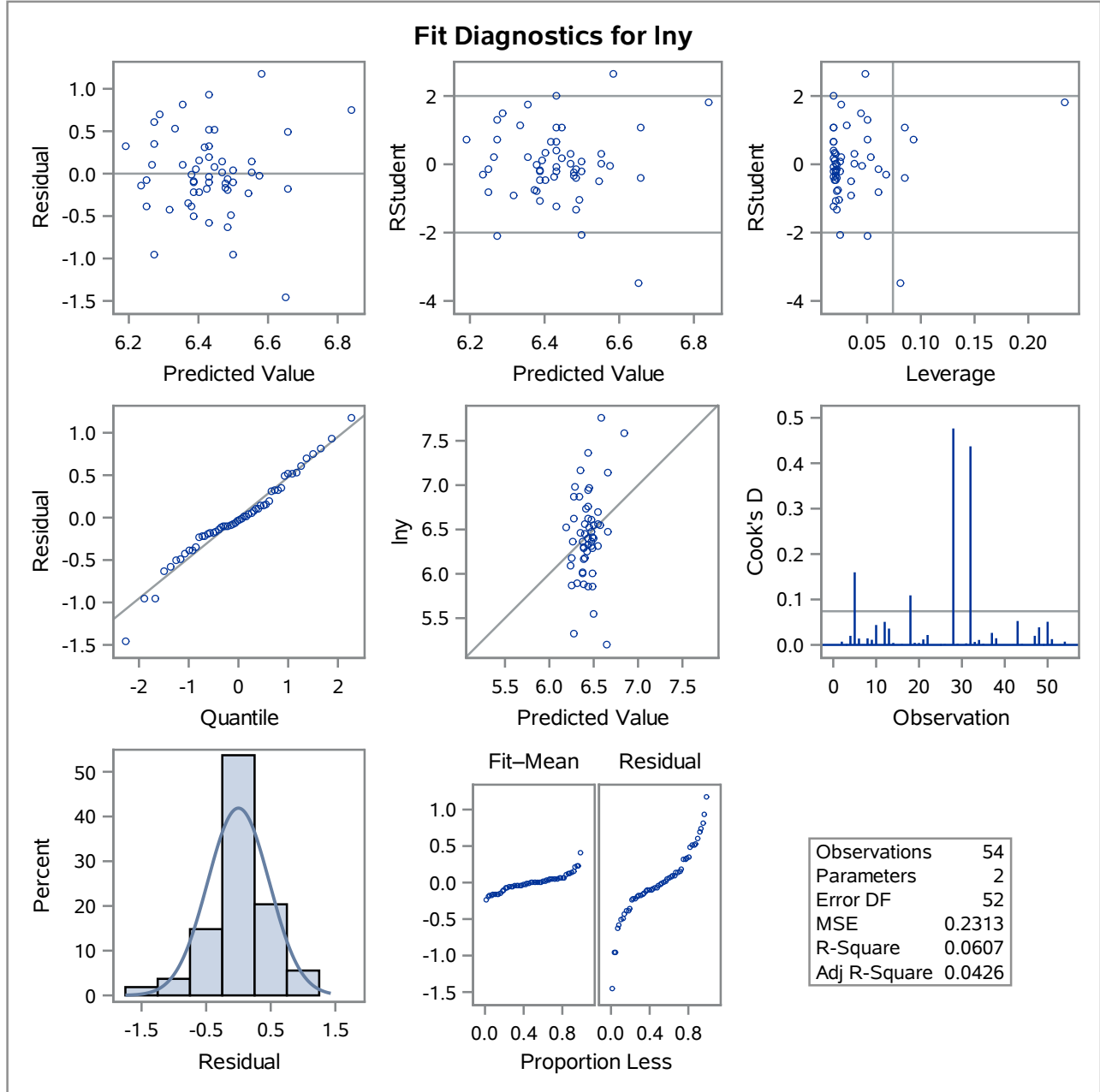
Output Statistics							
Obs	Dependent Variable	Predicted Value	Std Error Mean Predict	Residual	Std Error Residual	Student Residual	Cook's D
34	6.94	6.4318	0.0655	0.5123	0.476	1.075	0.011
35	6.18	6.4016	0.0673	-0.2236	0.476	-0.470	0.002
36	6.45	6.3940	0.0684	0.0580	0.476	0.122	0.000
37	6.52	6.1901	0.1466	0.3290	0.458	0.718	0.026
38	5.89	6.3185	0.0896	-0.4269	0.473	-0.903	0.015
39	6.46	6.3563	0.0770	0.1005	0.475	0.212	0.001
40	6.56	6.4016	0.0673	0.1566	0.476	0.329	0.001
41	6.28	6.3865	0.0697	-0.1023	0.476	-0.215	0.000
42	6.37	6.2656	0.1113	0.1008	0.468	0.216	0.001
43	7.15	6.6584	0.1405	0.4884	0.460	1.062	0.053
44	6.29	6.4847	0.0718	-0.1968	0.476	-0.414	0.002
45	6.18	6.2505	0.1180	-0.0726	0.466	-0.156	0.001
46	6.42	6.4847	0.0718	-0.0696	0.476	-0.146	0.000
47	6.87	6.3336	0.0841	0.5333	0.474	1.126	0.020
48	7.17	6.3563	0.0770	0.8138	0.475	1.714	0.039
49	6.36	6.3789	0.0712	-0.0142	0.476	-0.030	0.000
50	6.98	6.2883	0.1015	0.6946	0.470	1.477	0.051
51	6.00	6.4922	0.0736	-0.4883	0.475	-1.027	0.013
52	6.36	6.4771	0.0702	-0.1158	0.476	-0.243	0.001
53	6.31	6.4771	0.0702	-0.1672	0.476	-0.351	0.001
54	6.48	6.6584	0.1405	-0.1799	0.460	-0.391	0.007

The REG Procedure
Model: MODEL1
Dependent Variable: lny

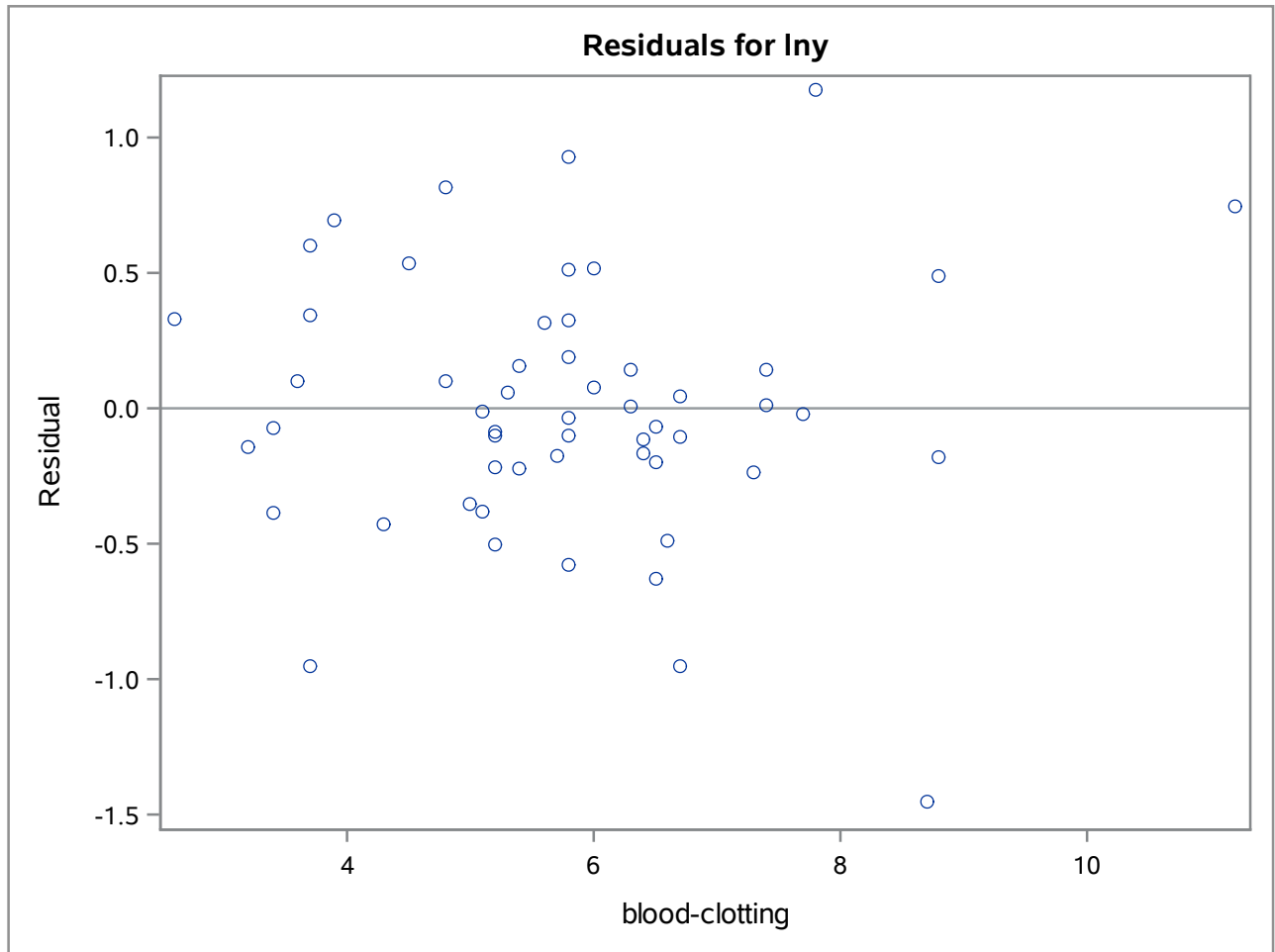


The REG Procedure
 Model: MODEL1
 Dependent Variable: Iny

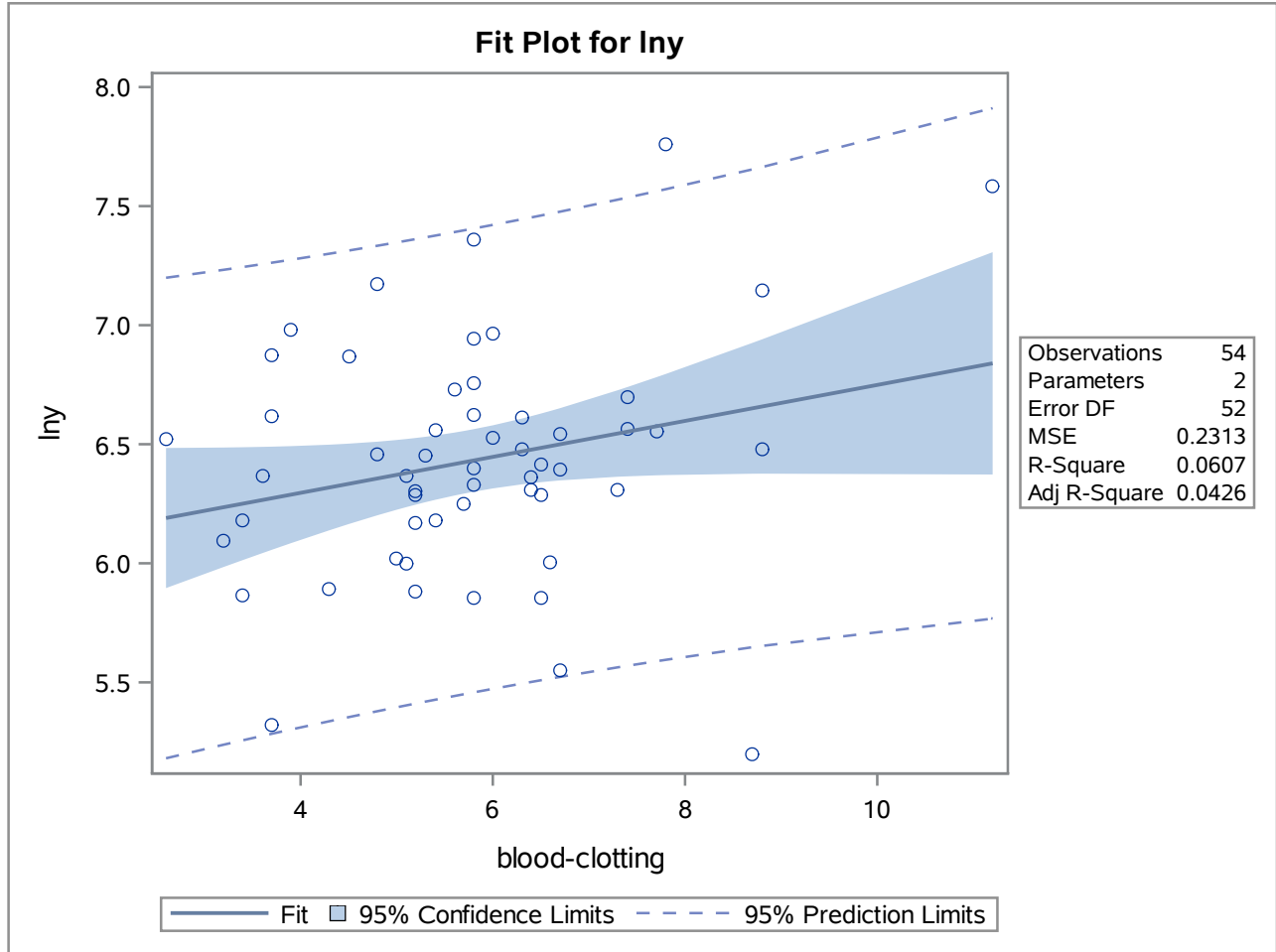
Sum of Residuals	0
Sum of Squared Residuals	12.02755
Predicted Residual SS (PRESS)	13.50796

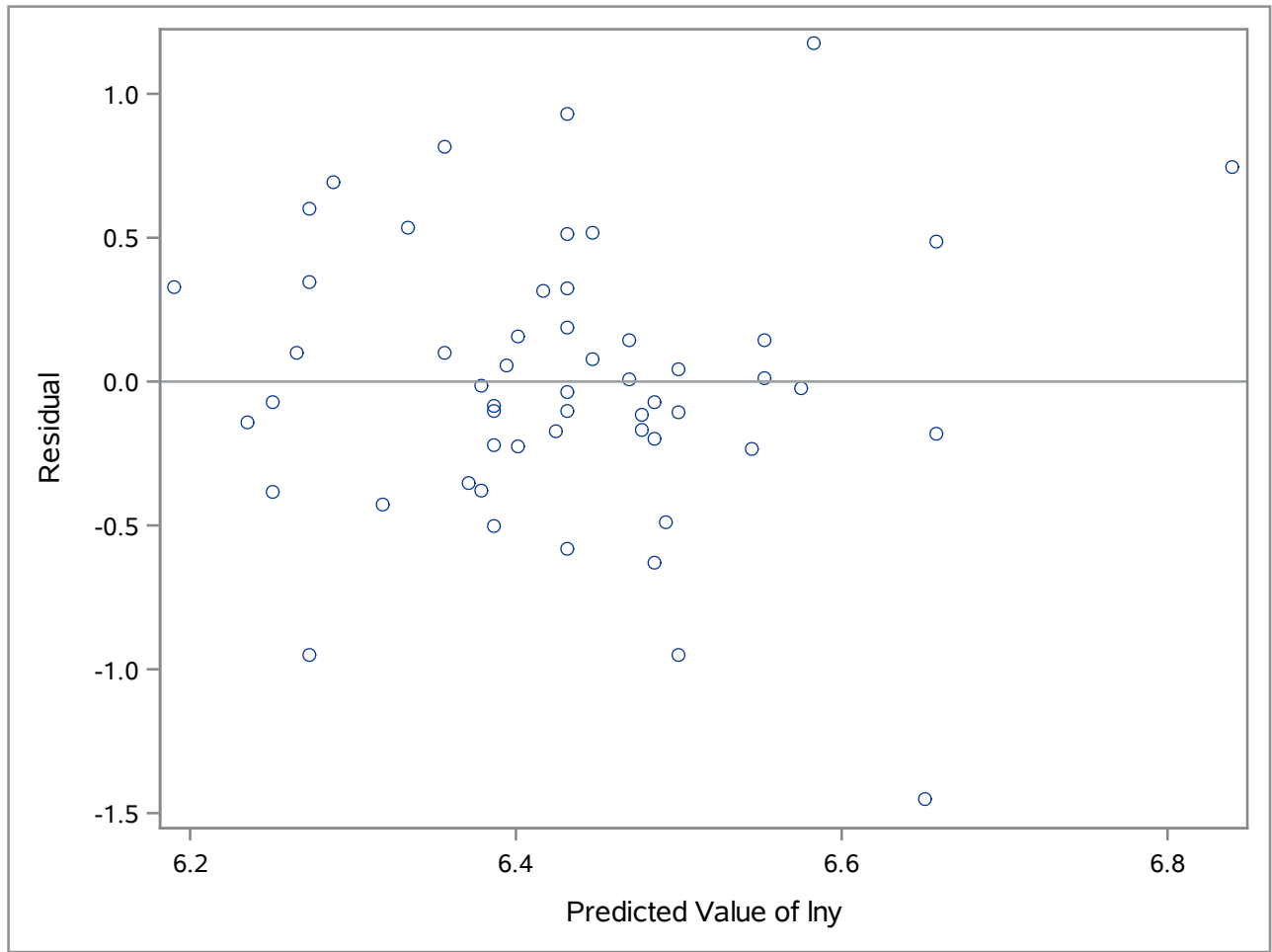


The REG Procedure
Model: MODEL1

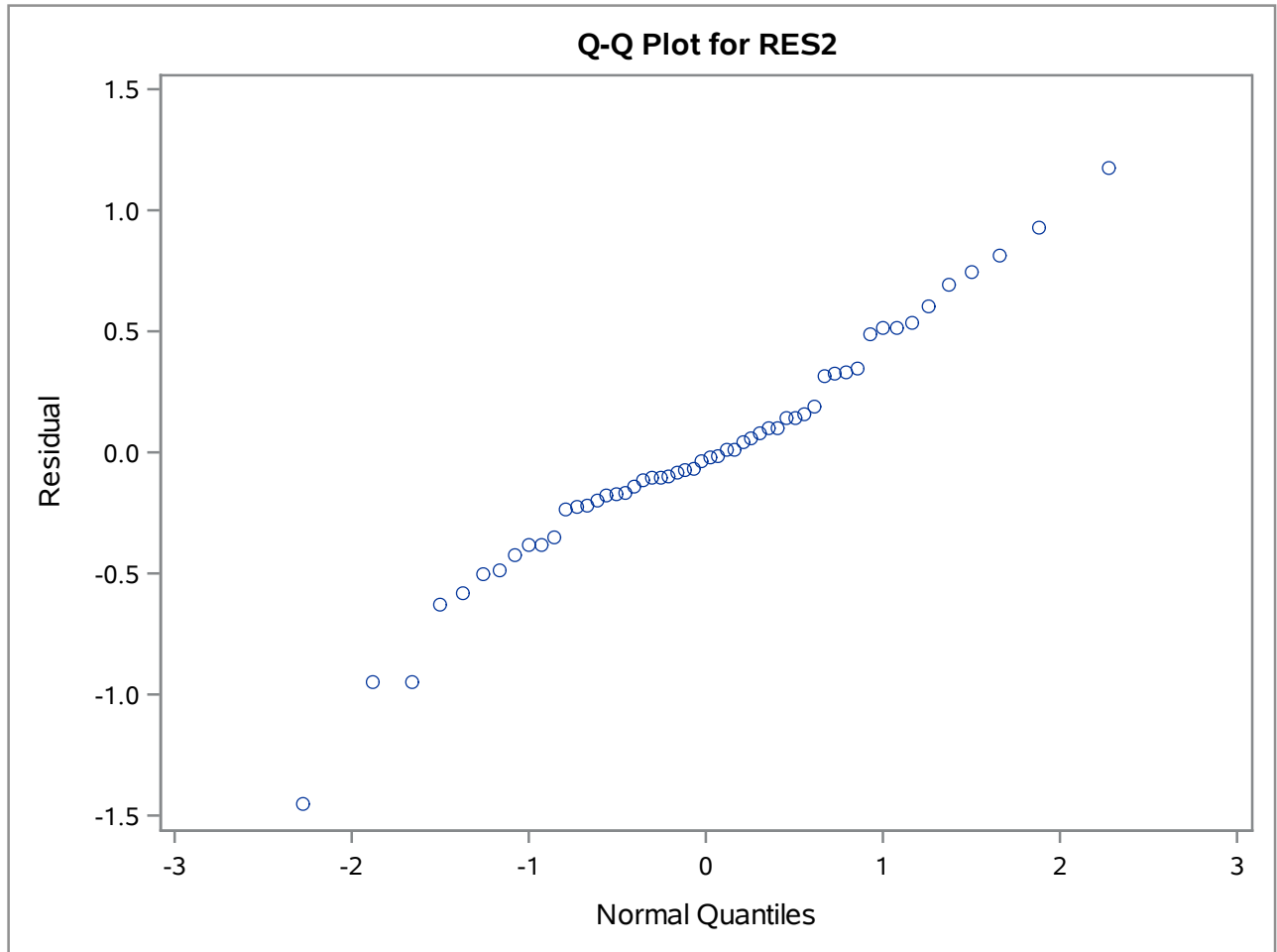


The REG Procedure
Model: MODEL1





The UNIVARIATE Procedure



The REG Procedure
Model: MODEL1
Dependent Variable: y survival

Number of Observations Read	54
Number of Observations Used	54

Analysis of Variance					
Source	DF	Sum of Squares	Mean Square	F Value	Pr > F
Model	8	6543615	817952	20.16	<.0001
Error	45	1825906	40576		
Corrected Total	53	8369521			

Root MSE	201.43406	R-Square	0.7818
Dependent Mean	702.09259	Adj R-Sq	0.7431
Coeff Var	28.69053		

Parameter Estimates						
Variable	Label	DF	Parameter Estimate	Standard Error	t Value	Pr > t
Intercept	Intercept	1	-1148.82301	242.32790	-4.74	<.0001
x1	blood-clotting	1	62.39036	24.46973	2.55	0.0143
x2	prognostic	1	8.97313	1.87410	4.79	<.0001
x3	enzyme	1	9.88808	1.74173	5.68	<.0001
x4	liver function	1	50.41274	44.95928	1.12	0.2681
x5	age	1	-0.95101	2.64862	-0.36	0.7212
x6	gender	1	15.87429	58.47458	0.27	0.7873
x7	moderate alcohol use	1	7.71313	64.95637	0.12	0.9060
x8	heavy alcohol use	1	320.69691	85.07006	3.77	0.0005

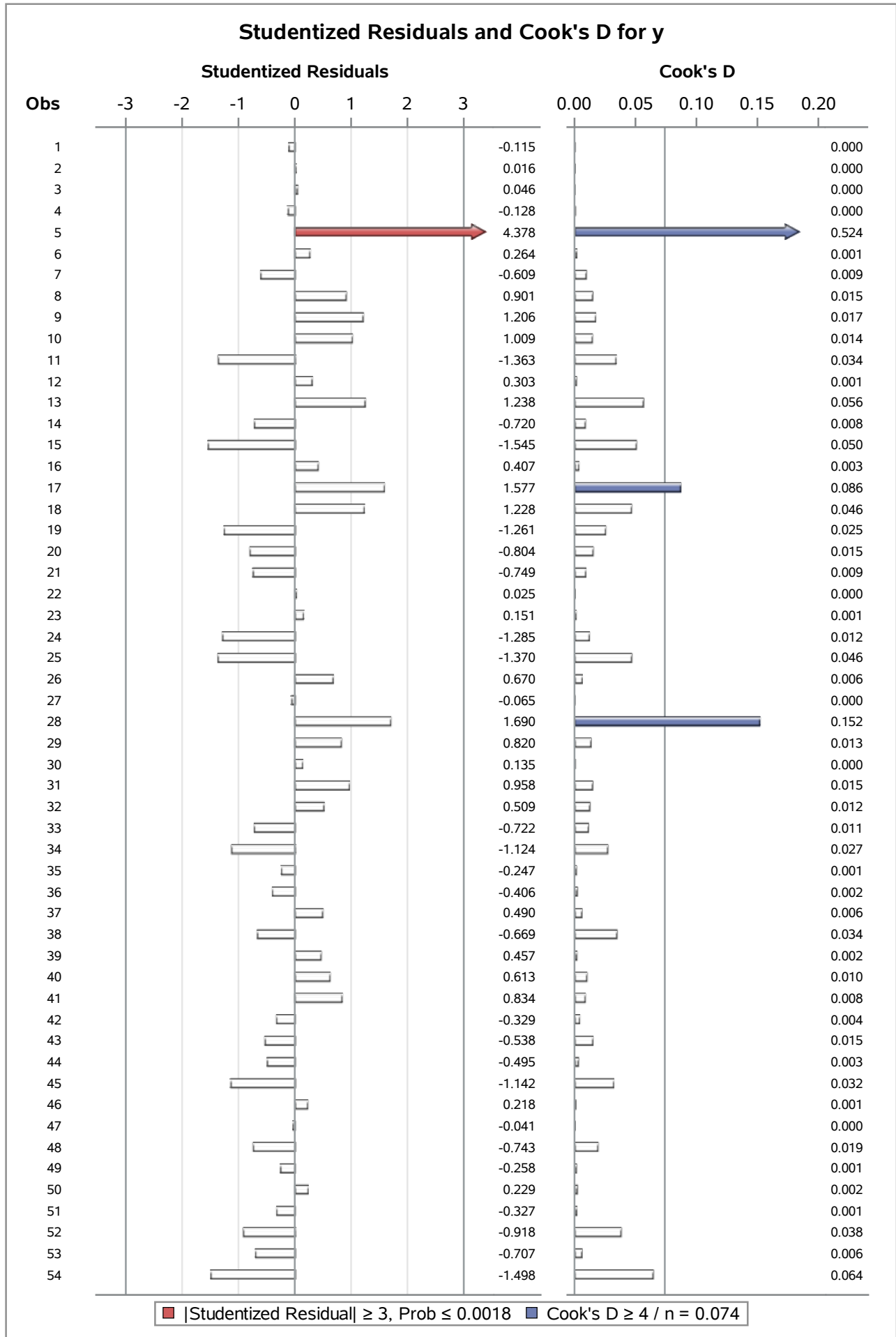
The REG Procedure
Model: MODEL1
Dependent Variable: y survival

Output Statistics							
Obs	Dependent Variable	Predicted Value	Std Error Mean Predict	Residual	Std Error Residual	Student Residual	Cook's D
1	695	717.1930	57.5319	-22.1930	193.0	-0.115	0.000
2	403	400.0084	69.4238	2.9916	189.1	0.016	0.000
3	710	701.6311	82.6403	8.3689	183.7	0.046	0.000
4	349	372.8457	76.4913	-23.8457	186.3	-0.128	0.000
5	2343	1553	89.4782	790.1190	180.5	4.378	0.524
6	348	299.3200	80.6986	48.6800	184.6	0.264	0.001
7	518	628.7755	86.4601	-110.7755	181.9	-0.609	0.009
8	749	580.6576	75.1202	168.3424	186.9	0.901	0.015
9	1056	824.8971	61.9865	231.1029	191.7	1.206	0.017
10	968	776.5144	67.2817	191.4856	189.9	1.009	0.014
11	745	999.4206	75.5502	-254.4206	186.7	-1.363	0.034
12	257	199.2832	66.3517	57.7168	190.2	0.303	0.001
13	1573	1357	100.3349	216.2058	174.7	1.238	0.056
14	858	993.5145	71.7631	-135.5145	188.2	-0.720	0.008
15	702	987.3603	80.2787	-285.3603	184.7	-1.545	0.050
16	809	732.9806	75.9608	76.0194	186.6	0.407	0.003
17	682	404.6830	98.2706	277.3170	175.8	1.577	0.086
18	205	-13.8871	93.7814	218.8871	178.3	1.228	0.046
19	550	787.7519	71.0117	-237.7519	188.5	-1.261	0.025
20	838	985.3246	83.5430	-147.3246	183.3	-0.804	0.015
21	359	500.2909	70.7181	-141.2909	188.6	-0.749	0.009
22	353	348.4749	92.6830	4.5251	178.8	0.025	0.000
23	599	572.9167	102.9839	26.0833	173.1	0.151	0.001
24	562	813.0073	49.3471	-251.0073	195.3	-1.285	0.012
25	651	900.5279	86.0071	-249.5279	182.1	-1.370	0.046
26	751	623.3017	65.2809	127.6983	190.6	0.670	0.006
27	545	557.2386	68.6073	-12.2386	189.4	-0.065	0.000
28	1965	1685	114.5645	279.9456	165.7	1.690	0.152
29	477	324.5371	77.5929	152.4629	185.9	0.820	0.013
30	600	574.0369	59.6252	25.9631	192.4	0.135	0.000
31	443	262.4471	71.1105	180.5529	188.5	0.958	0.015
32	181	95.2748	110.2682	85.7252	168.6	0.509	0.012
33	411	544.3239	80.3132	-133.3239	184.7	-0.722	0.011

The REG Procedure
Model: MODEL1
Dependent Variable: y survival

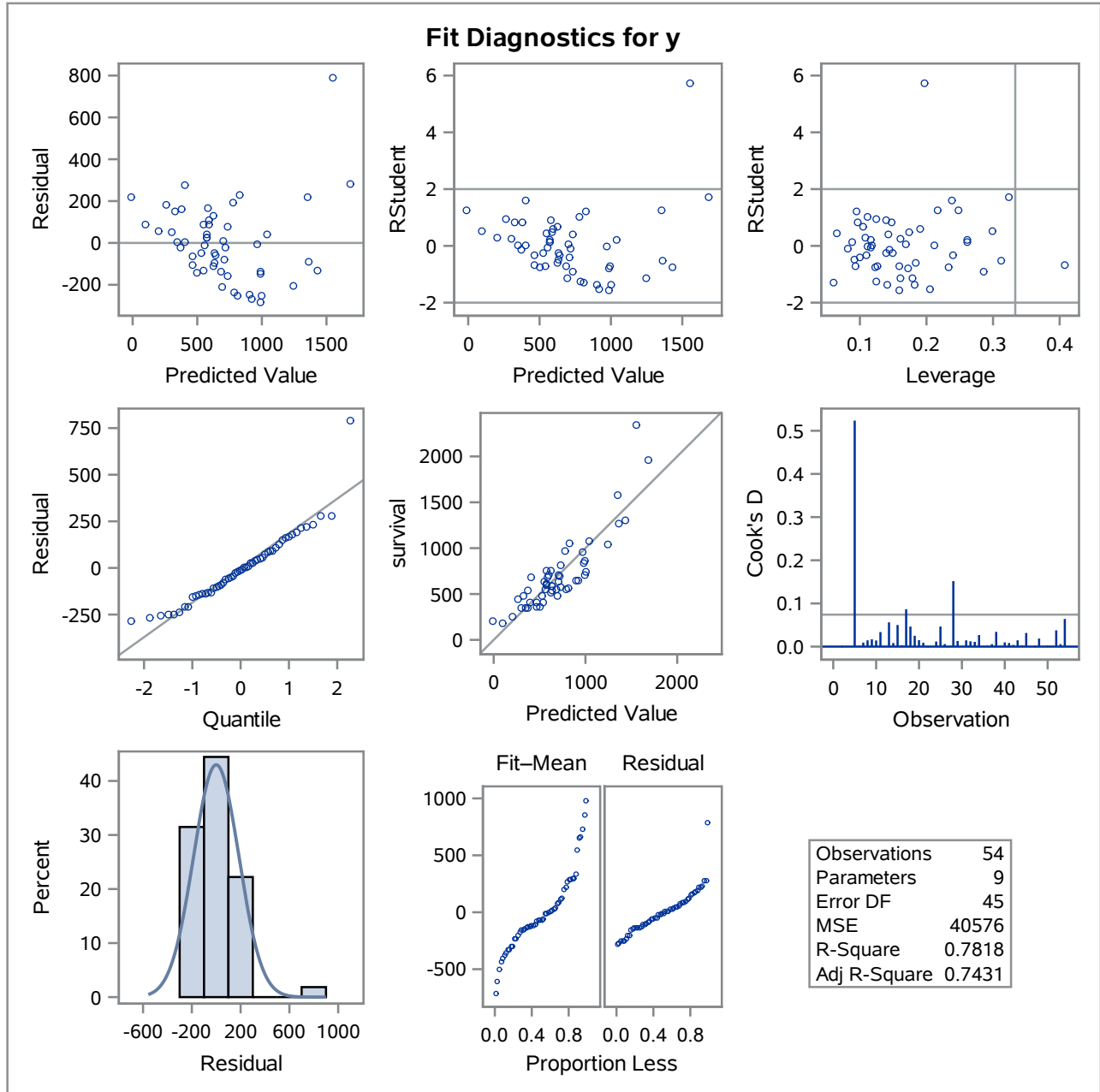
Output Statistics							
Obs	Dependent Variable	Predicted Value	Std Error Mean Predict	Residual	Std Error Residual	Student Residual	Cook's D
34	1037	1245	80.6126	-207.5421	184.6	-1.124	0.027
35	482	527.8881	77.7592	-45.8881	185.8	-0.247	0.001
36	634	711.5335	63.7112	-77.5335	191.1	-0.406	0.002
37	678	588.3295	84.0049	89.6705	183.1	0.490	0.006
38	362	465.6572	128.6253	-103.6572	155.0	-0.669	0.034
39	637	548.1033	51.7030	88.8967	194.7	0.457	0.002
40	705	593.9200	87.9022	111.0800	181.2	0.613	0.010
41	536	376.2453	62.6602	159.7547	191.4	0.834	0.008
42	582	639.8780	98.5328	-57.8780	175.7	-0.329	0.004
43	1270	1360	112.6889	-89.7514	167.0	-0.538	0.015
44	538	632.9901	60.7927	-94.9901	192.0	-0.495	0.003
45	482	690.5315	85.1289	-208.5315	182.6	-1.142	0.032
46	611	569.7097	68.5705	41.2903	189.4	0.218	0.001
47	960	967.7578	67.1533	-7.7578	189.9	-0.041	0.000
48	1300	1431	97.1942	-131.0145	176.4	-0.743	0.019
49	581	629.2383	75.3799	-48.2383	186.8	-0.258	0.001
50	1078	1038	102.9033	39.6906	173.2	0.229	0.002
51	405	467.2040	66.8293	-62.2040	190.0	-0.327	0.001
52	579	735.2529	107.8585	-156.2529	170.1	-0.918	0.038
53	550	685.6384	61.4017	-135.6384	191.8	-0.707	0.006
54	651	920.1228	91.1217	-269.1228	179.6	-1.498	0.064

The REG Procedure
Model: MODEL1
Dependent Variable: y survival

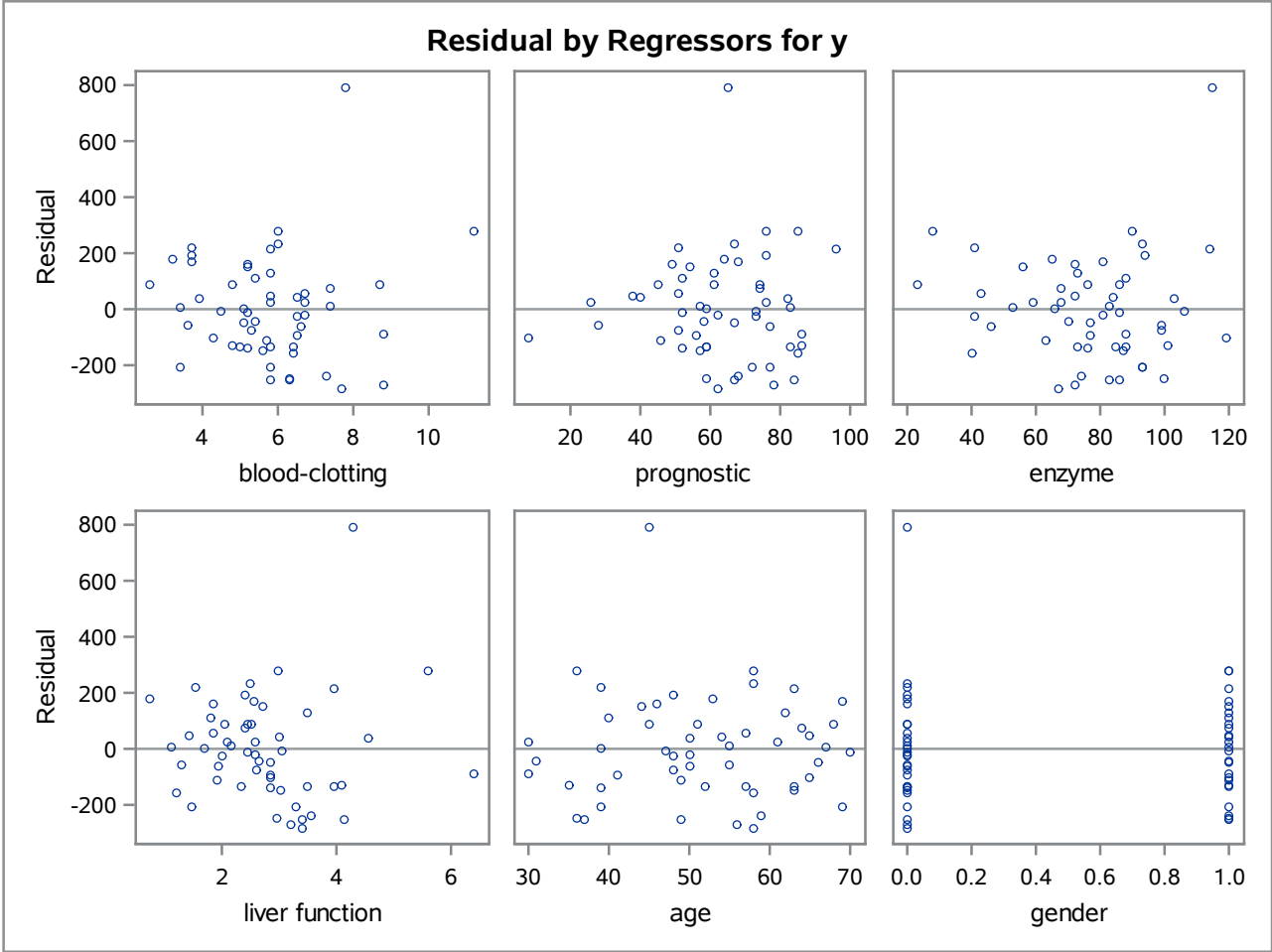


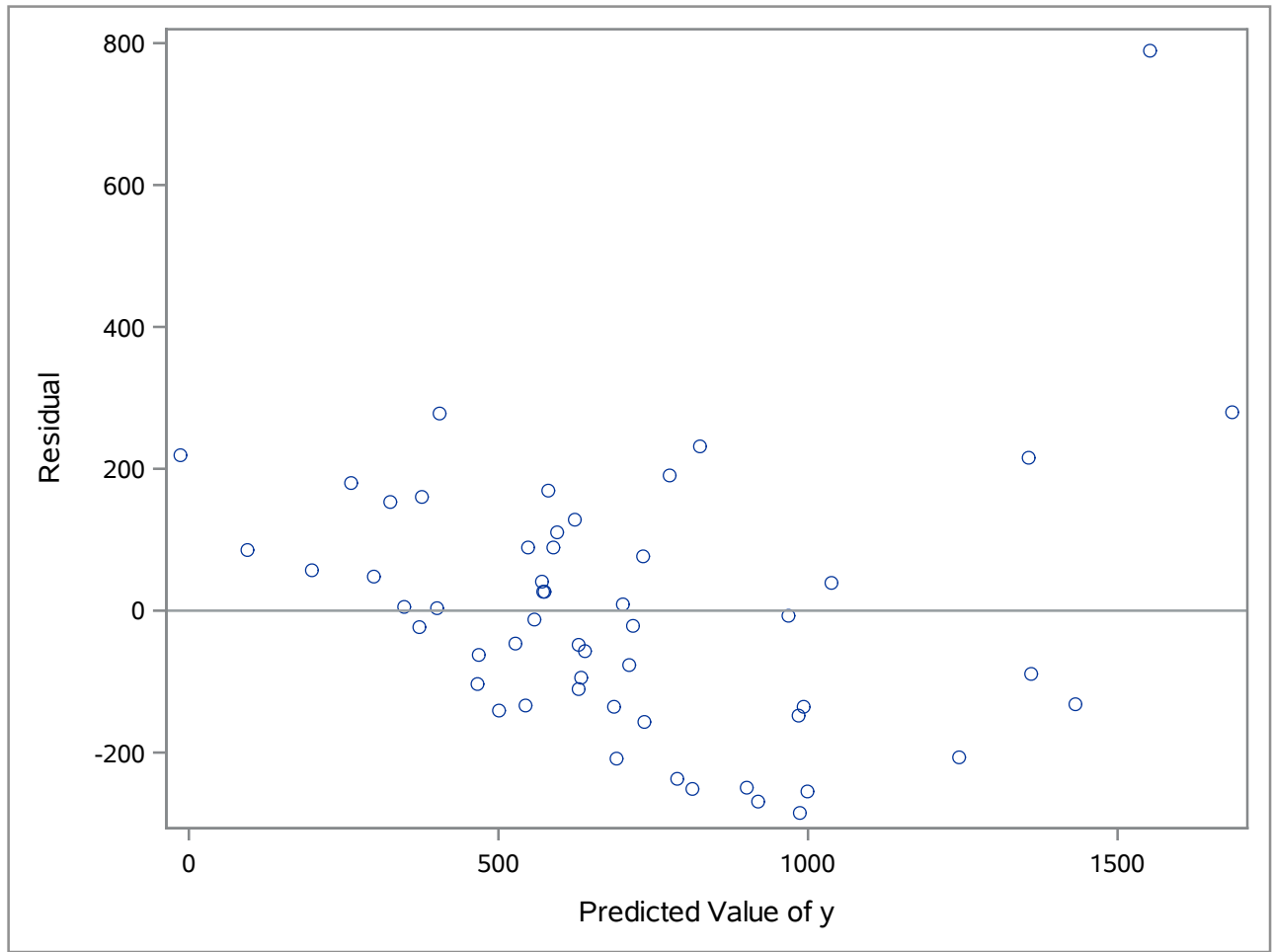
The REG Procedure
 Model: MODEL1
 Dependent Variable: y survival

Sum of Residuals	0
Sum of Squared Residuals	1825906
Predicted Residual SS (PRESS)	2776907

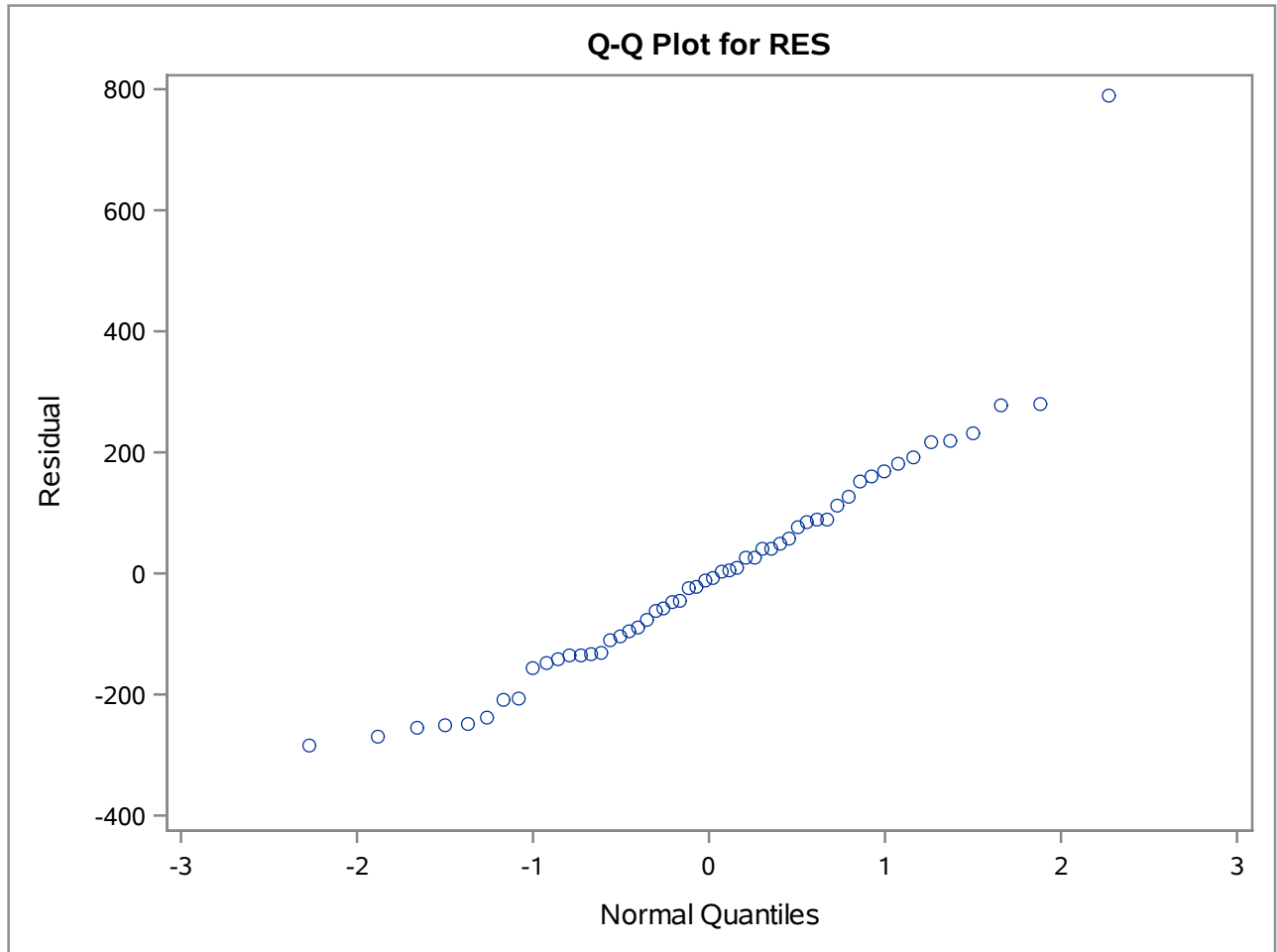


The REG Procedure
Model: MODEL1





The UNIVARIATE Procedure



The REG Procedure
Model: MODEL1
Dependent Variable: lny

Number of Observations Read	54
Number of Observations Used	54

Analysis of Variance					
Source	DF	Sum of Squares	Mean Square	F Value	Pr > F
Model	8	10.83400	1.35425	30.93	<.0001
Error	45	1.97051	0.04379		
Corrected Total	53	12.80451			

Root MSE	0.20926	R-Square	0.8461
Dependent Mean	6.43054	Adj R-Sq	0.8187
Coeff Var	3.25413		

Parameter Estimates						
Variable	Label	DF	Parameter Estimate	Standard Error	t Value	Pr > t
Intercept	Intercept	1	4.05095	0.25174	16.09	<.0001
x1	blood-clotting	1	0.06855	0.02542	2.70	0.0098
x2	prognostic	1	0.01346	0.00195	6.91	<.0001
x3	enzyme	1	0.01495	0.00181	8.26	<.0001
x4	liver function	1	0.00793	0.04671	0.17	0.8659
x5	age	1	-0.00357	0.00275	-1.30	0.2014
x6	gender	1	0.08415	0.06075	1.39	0.1728
x7	moderate alcohol use	1	0.05731	0.06748	0.85	0.4002
x8	heavy alcohol use	1	0.38819	0.08837	4.39	<.0001

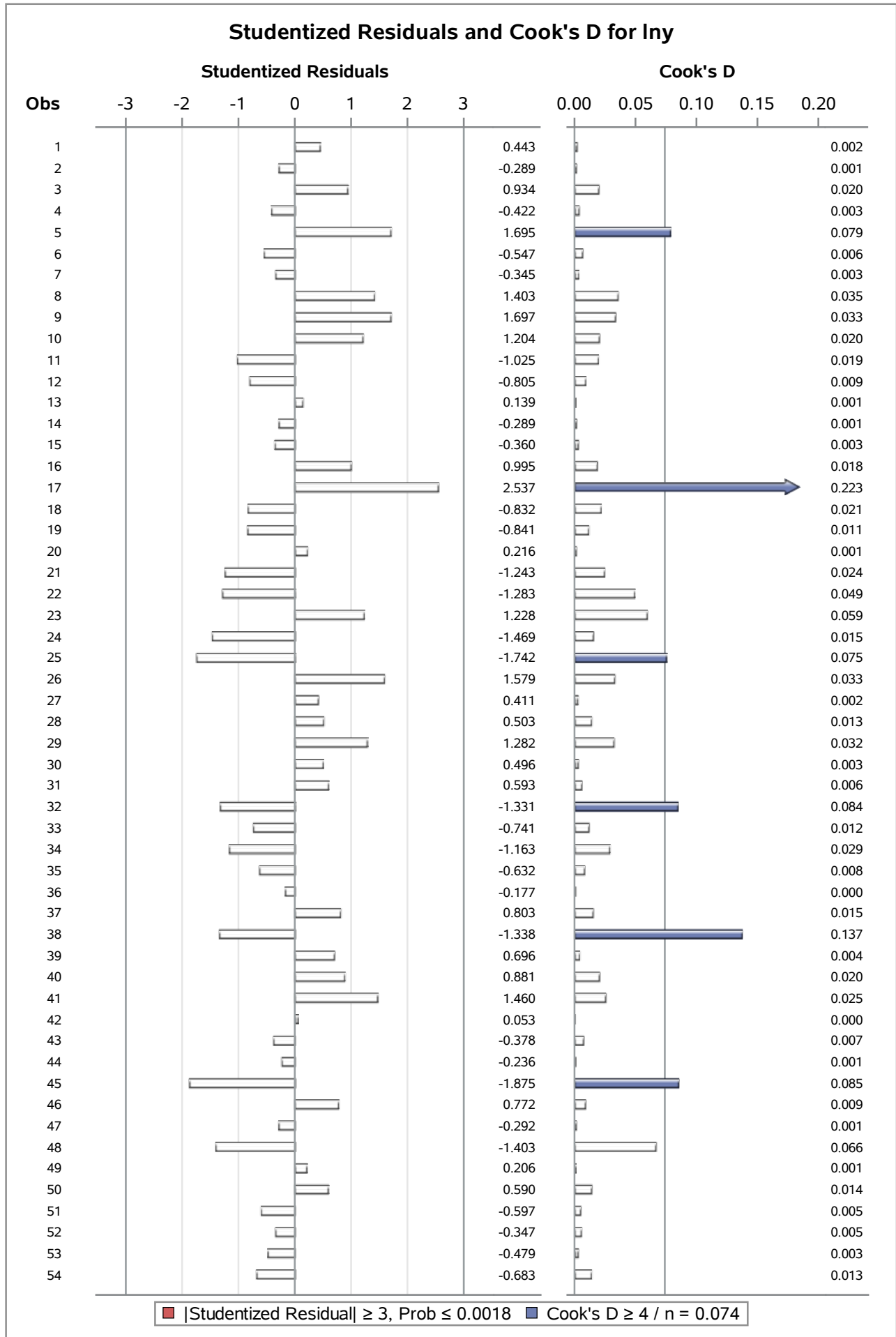
The REG Procedure
Model: MODEL1
Dependent Variable: lny

Output Statistics							
Obs	Dependent Variable	Predicted Value	Std Error Mean Predict	Residual	Std Error Residual	Student Residual	Cook's D
1	6.54	6.4550	0.0598	0.0889	0.201	0.443	0.002
2	6.00	6.0556	0.0721	-0.0567	0.196	-0.289	0.001
3	6.57	6.3871	0.0859	0.1782	0.191	0.934	0.020
4	5.86	5.9367	0.0795	-0.0816	0.194	-0.422	0.003
5	7.76	7.4413	0.0930	0.3179	0.187	1.695	0.079
6	5.85	5.9571	0.0838	-0.1049	0.192	-0.547	0.006
7	6.25	6.3153	0.0898	-0.0653	0.189	-0.345	0.003
8	6.62	6.3463	0.0780	0.2724	0.194	1.403	0.035
9	6.96	6.6245	0.0644	0.3378	0.199	1.697	0.033
10	6.88	6.6378	0.0699	0.2375	0.197	1.204	0.020
11	6.61	6.8122	0.0785	-0.1988	0.194	-1.025	0.019
12	5.55	5.7082	0.0689	-0.1591	0.198	-0.805	0.009
13	7.36	7.3355	0.1042	0.0253	0.181	0.139	0.001
14	6.75	6.8111	0.0746	-0.0565	0.196	-0.289	0.001
15	6.55	6.6231	0.0834	-0.0691	0.192	-0.360	0.003
16	6.70	6.5029	0.0789	0.1929	0.194	0.995	0.018
17	6.53	6.0615	0.1021	0.4635	0.183	2.537	0.223
18	5.32	5.4771	0.0974	-0.1541	0.185	-0.832	0.021
19	6.31	6.4747	0.0738	-0.1648	0.196	-0.841	0.011
20	6.73	6.6899	0.0868	0.0411	0.190	0.216	0.001
21	5.88	6.1268	0.0735	-0.2435	0.196	-1.243	0.024
22	5.87	6.1048	0.0963	-0.2383	0.186	-1.283	0.049
23	6.40	6.1745	0.1070	0.2208	0.180	1.228	0.059
24	6.33	6.6295	0.0513	-0.2980	0.203	-1.469	0.015
25	6.48	6.8082	0.0893	-0.3297	0.189	-1.742	0.075
26	6.62	6.3088	0.0678	0.3126	0.198	1.579	0.033
27	6.30	6.2199	0.0713	0.0809	0.197	0.411	0.002
28	7.58	7.4968	0.1190	0.0865	0.172	0.503	0.013
29	6.17	5.9200	0.0806	0.2475	0.193	1.282	0.032
30	6.40	6.2977	0.0619	0.0992	0.200	0.496	0.003
31	6.09	5.9775	0.0739	0.1161	0.196	0.593	0.006
32	5.20	5.4316	0.1146	-0.2331	0.175	-1.331	0.084
33	6.02	6.1608	0.0834	-0.1422	0.192	-0.741	0.012

The REG Procedure
Model: MODEL1
Dependent Variable: lny

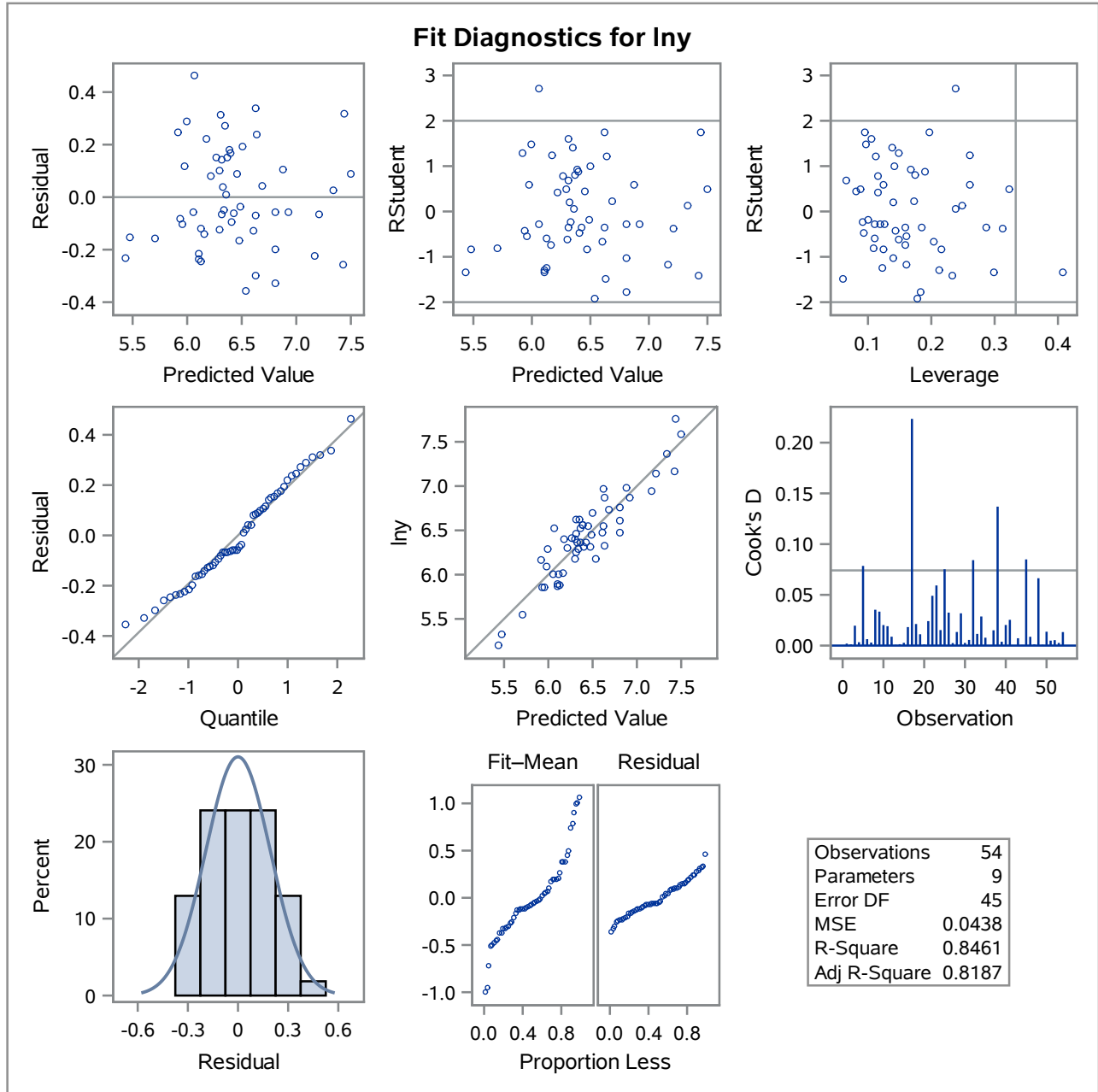
Output Statistics							
Obs	Dependent Variable	Predicted Value	Std Error Mean Predict	Residual	Std Error Residual	Student Residual	Cook's D
34	6.94	7.1672	0.0837	-0.2231	0.192	-1.163	0.029
35	6.18	6.3000	0.0808	-0.1220	0.193	-0.632	0.008
36	6.45	6.4873	0.0662	-0.0352	0.199	-0.177	0.000
37	6.52	6.3665	0.0873	0.1527	0.190	0.803	0.015
38	5.89	6.1071	0.1336	-0.2155	0.161	-1.338	0.137
39	6.46	6.3161	0.0537	0.1407	0.202	0.696	0.004
40	6.56	6.3923	0.0913	0.1659	0.188	0.881	0.020
41	6.28	5.9937	0.0651	0.2904	0.199	1.460	0.025
42	6.37	6.3568	0.1024	0.009702	0.183	0.053	0.000
43	7.15	7.2124	0.1171	-0.0656	0.173	-0.378	0.007
44	6.29	6.3349	0.0632	-0.0471	0.200	-0.236	0.001
45	6.18	6.5335	0.0884	-0.3556	0.190	-1.875	0.085
46	6.42	6.2632	0.0712	0.1519	0.197	0.772	0.009
47	6.87	6.9245	0.0698	-0.0575	0.197	-0.292	0.001
48	7.17	7.4273	0.1010	-0.2572	0.183	-1.403	0.066
49	6.36	6.3248	0.0783	0.0400	0.194	0.206	0.001
50	6.98	6.8767	0.1069	0.1062	0.180	0.590	0.014
51	6.00	6.1218	0.0694	-0.1179	0.197	-0.597	0.005
52	6.36	6.4226	0.1120	-0.0613	0.177	-0.347	0.005
53	6.31	6.4054	0.0638	-0.0955	0.199	-0.479	0.003
54	6.48	6.6059	0.0947	-0.1274	0.187	-0.683	0.013

The REG Procedure
Model: MODEL1
Dependent Variable: lny

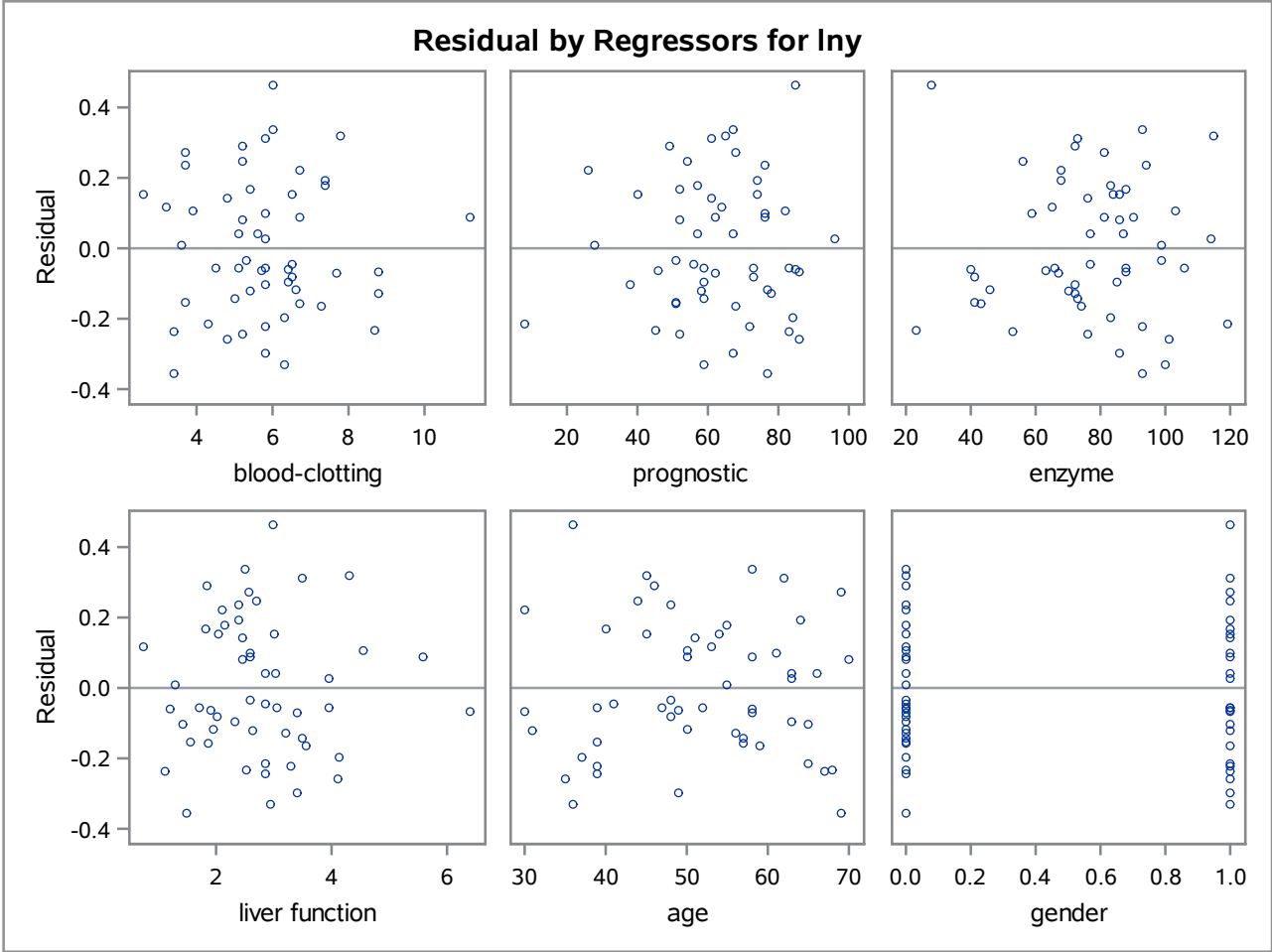


The REG Procedure
 Model: MODEL1
 Dependent Variable: Iny

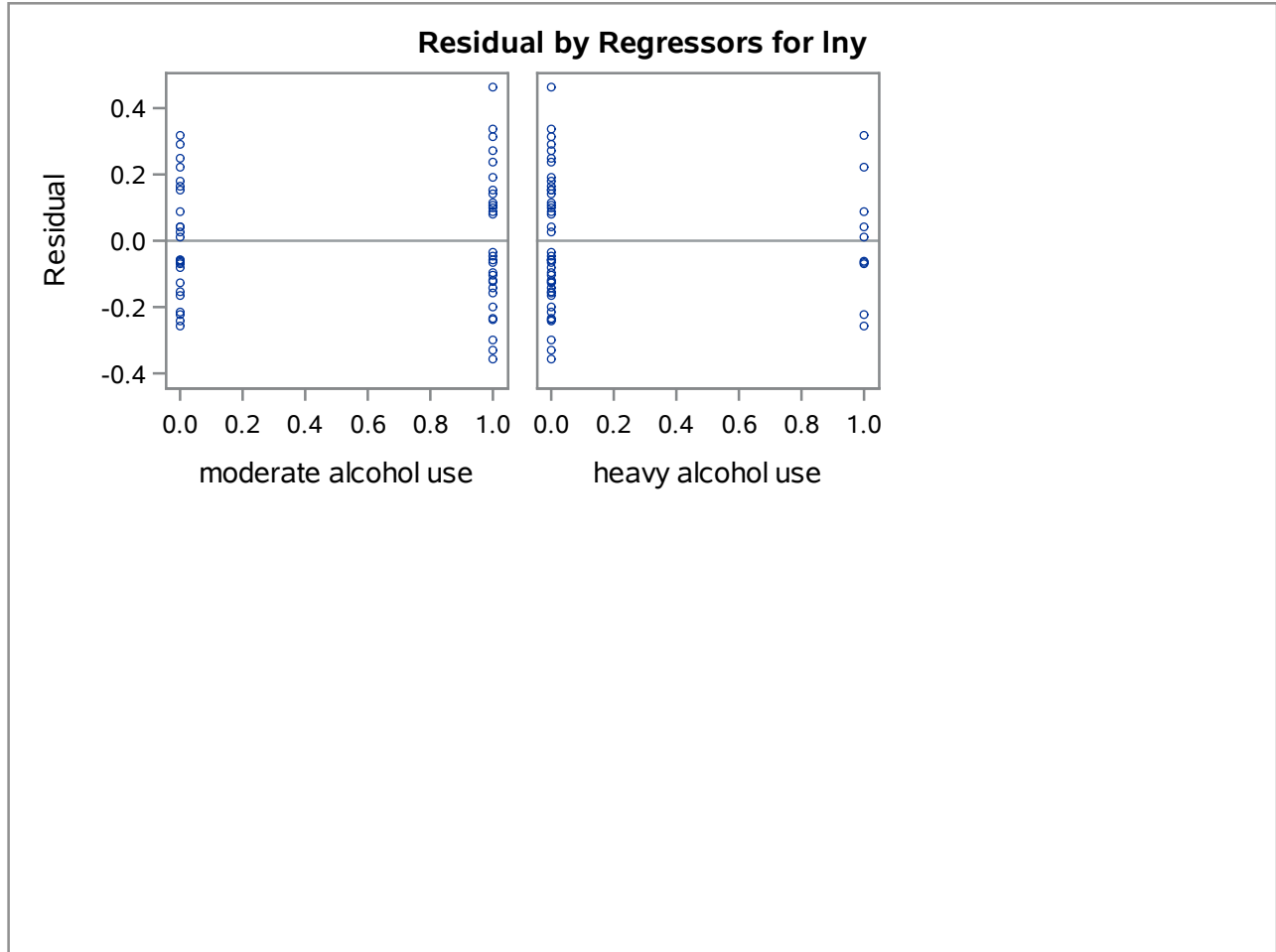
Sum of Residuals	0
Sum of Squared Residuals	1.97051
Predicted Residual SS (PRESS)	2.93066

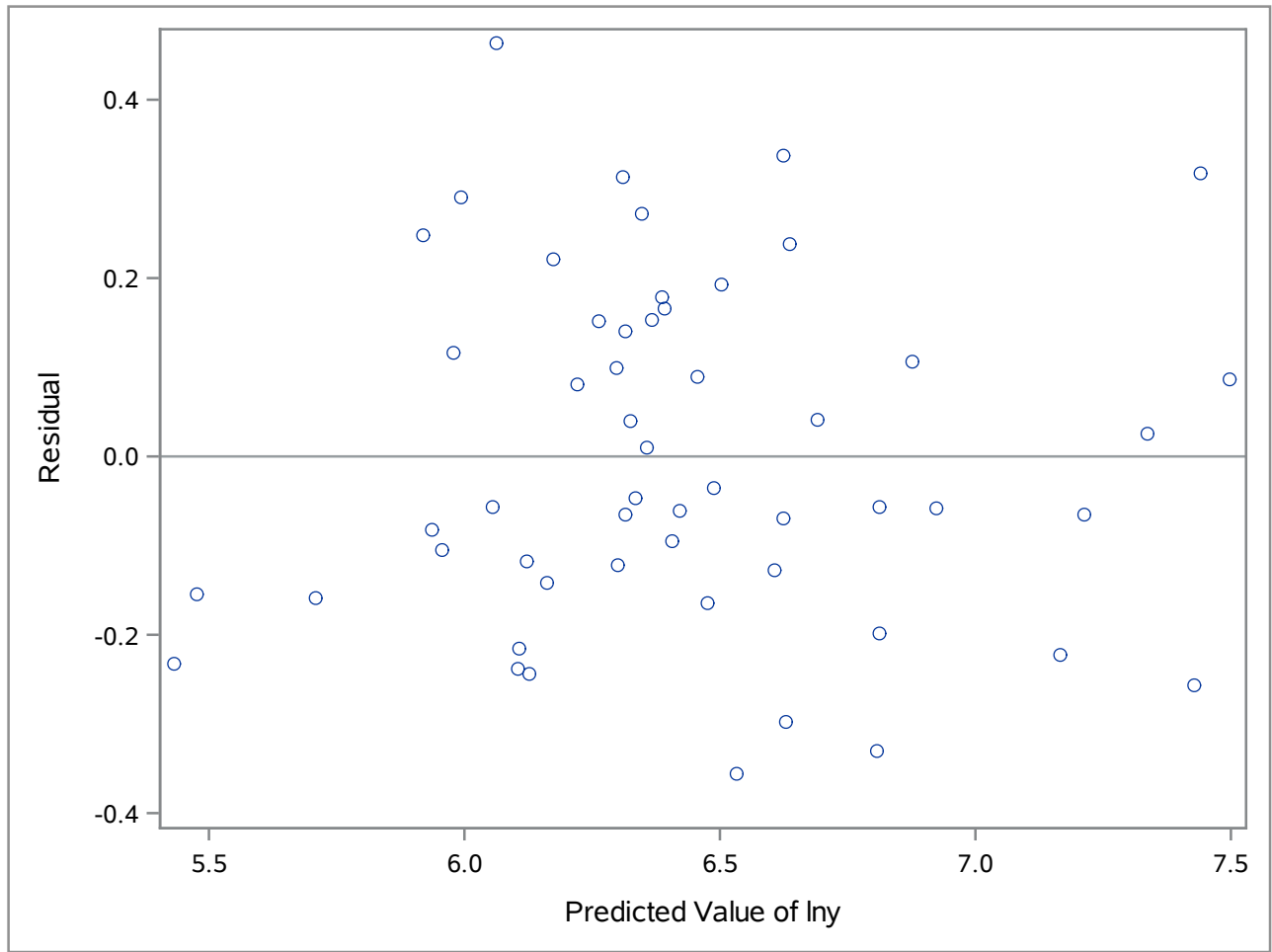


The REG Procedure
Model: MODEL1



The REG Procedure
Model: MODEL1





The UNIVARIATE Procedure

